



ELSEWEDY

ELECTRIC

BUSWAY

SMART,
POWER
SEAMLESS
PERFORMANCE

INDEX



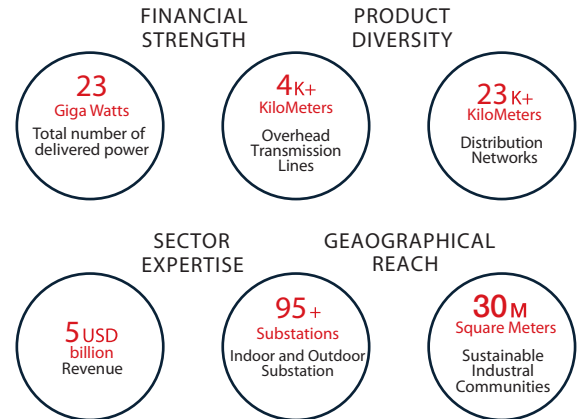
Introduction	03
Factory Brief	04
Product Overview	05
Product Range	08
Product Features	09
Busway Main Components	10
Certificates	13
Partners in Success	15

Brief About Elsewedy Electric:

A global leader that has evolved from a local manufacturer of electrical products into an integrated infrastructure solutions provider; with over 19,000 employees and with recorded revenues of more than USD 5 billion in 2023. We Operate in five key business sectors: Wire, Cable & Accessories, Electrical Products, Engineering & Construction, Digital Solutions, and Infrastructure Investments. With a strong presence in 19 different countries, 31 production facilities spread across African and Asian countries including Egypt, Algeria, KSA, Qatar, Indonesia, Pakistan, and Tanzania. We export a wide range of high-end products to over 110 countries worldwide. At the heart of our approach is an all-in-one integrated Engineering, Procurement & Construction (EPC) service, enabling us to deliver the most complex turnkey projects on time and with the highest efficiency.

A vital part of our mission is ensuring that the communities where we operate develop and flourish. We work to facilitate the global transition toward a sustainable energy future, whereby we established green energy projects and smart cities across Africa, the Middle East, and Eastern Europe. In alignment with our 2030 sustainability strategy, we aim to extend and enhance our positive impact, provide energy services to a growing customer base, and drive decarbonization, digitalization, and sustainable transition in Egypt and beyond.

Our growth has been driven by hiring talents and empowering businesses and communities where we operate. We enable customers to digitize and meet the challenges of an ever-changing world. Our extensive range of digital solutions allows them to become smarter, faster, and more agile. We are committed to doing our best to serve our customers while caring for the environment. We aim to use our knowledge of our environmental impact to better develop more sustainable business scenarios and evaluate our future policies.



Factory Brief

The production facility located in the 10th of Ramadan city in Cairo, Egypt, is built on an area spanning over 36 thousand square meters with 50% covered area, and it is considered one of the largest factories in the MEA region.

The factory hosts a production line of sandwiched non-ventilated busways ranging from 800 A to 6300 A for both copper conductor (Power Link Busway) and Aluminum bimetal conductor (Spine Busway).

36,271 M²

Factory Total Area



Intertek

QUALITY SYSTEM & ENVIRONMENTAL MANAGEMENT



Product Overview

The busway is a prefabricated electrical distribution system consisting of dielectric insulated bus bars in a protective enclosure / housing, including straight lengths, fittings, devices, and accessories.

R&D and Test Lab

- In House R&D Team
- High Precision Electrical Measurements
- Elsewedy Certified Laboratory Capable of:

- 1- Temperature Rise Test**
- 2- Impulse Test**
- 3- Epoxy Insulation Tests**
- 4- Dielectric Test**

Services



Pre-sales Customer Services

(Site take off, technical review, design check & customer data analysis, etc.)



Full Design Package (Busway software)



Emergency Production Teams



Fast Response & Delivery Time



7/24 After Sales Hotline (Services van)



After sales Customer Services

(Site supervision, installation, testing & commissioning)

Busway Advantages

- Easy Installation
- Compact Design
- Distribution of Loads
- Space Saving
- Long Life
- Low Fire Load
- Flexibility
- Excellent Short Circuit
- Economical and Cost Saving
- Low Voltage Drop
- Maintenance Free

Busway System Applications



Commercial & Residential Structures



High Rise Buildings



Airports & High Security Installations



Data Centers



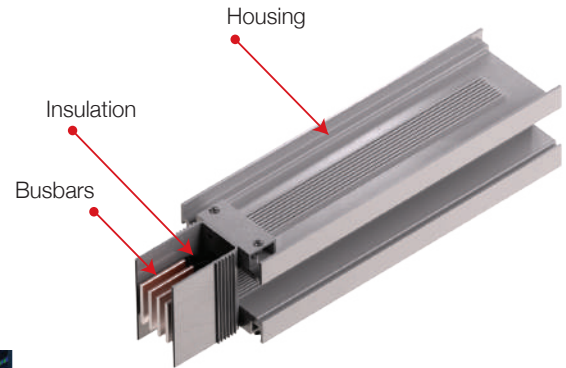
Oil & Gas



Hospitals



Plants / Factories



Why Elsewedy Electric Busway?

- First busway dielectric epoxy insulation facility in Africa (PET Upon Request).
- Highest caliber services team with total of 90 years of accumulated experiences.
- 24/7 Service hotline **19159**.
- In-house certified test lab.
- In-house bars electro-plating (Tin/ Silver).
- Special software for design by REVIT (BIM) and AutoCAD.
- Elsewedy Electric Busway is designed as per IEC 61439-1/6.
- Certified by ASTA/UL for all our current ratings.
- Our factory certified by ASTA Diamond.
- Smart design for easy, fast and safe installation.
- Busway joint with temperature monitoring feature allows you to monitor your busway. (Optional)
- Tap off boxes can be equipped with many types/models/brands of breakers



Intertek



Product Range

- Our busway complies to IEC 61439-1&6 and is certified by ASTA/ UL.
- Available with TPN as standard configuration and TPNE with 100% or 200% neutral and 50 % or 100% earth upon request.

POWER LINK Copper

SPINE Aluminium Bi-metal

Housing Material

Al



Conductor

Cu

Al

Current Rating (A)

800 1000 1250 1350 1600 2000 2250 2500 3200 4000 5000 6300



Insulation Type

Epoxy
PET

Insulation Class

B/F
B/F

IP

54/ 55 & 65
54/ 55 & 65

Frequency

50/ 60
50/ 60

Voltage

Up to 1000 V
Up to 1000 V

- Copper Conductor with end Tin/Silver Plating
- Aluminium Bi-metal Conductor with end Silver Plating

Product Features

1- Housing:

- Powder coated extruded aluminium housing.
- Lightweight aluminium is easier to handle and install which in return saves more labor cost, installation time and serves best heat dissipation.
- High efficiency compact (sandwiched) design, totally enclosed, non-ventilated.
- Internal ground bar 50% available for both aluminium and copper bars busway. (Optional)

2- Conductors:

Copper:

- Highly conductive, electrical grade copper 99,999 %
- Mill certificate for each batch upon request.
- Tin / Silver plating.

Aluminium Bi-metal:

- Highly conductive, electrical grade aluminium.
- Silver plating.

3- Tin/ Silver Plating:

- Tin plating is standard on all busway copper conductors at all contact points, and silver plating is available upon request.
- Silver plating system is standard on all busway aluminium (Bi-metal) conductors at all contact points.
- The plating process takes place in-house

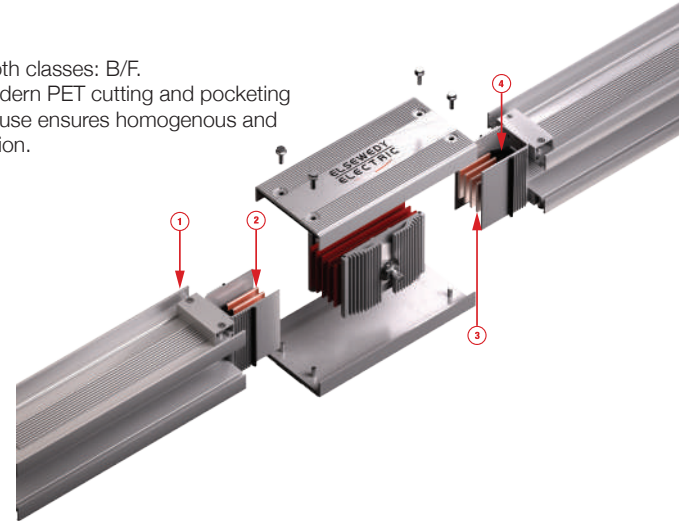
4- Insulations:

Epoxy

- Elsewedy Electric Busway plant is the first and largest factory in Africa that provides epoxy insulation.
- Available in both classes: B/F.
- Most sophisticated automatic electrostatic epoxy coating plant in house ensures homogenous and reliable insulation.
- Halogen & toxic free.
- V0 flammability class.
- All products are 100% brush tested.

PET Film

- Available in both classes: B/F.
- Automatic modern PET cutting and pocketing machine in house ensures homogenous and reliable insulation.



Busway Main Components

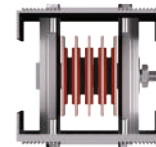
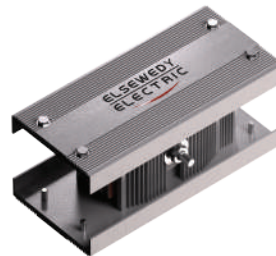
Straight Length (400 - 4000 mm):

- Feeder
- No opening.
- Plug in
- Openings on both sides, openings located on both sides for optimum utilization.
- Riser
- Openings on one side. Unusable plug-in outlets in vertical position are eliminated.



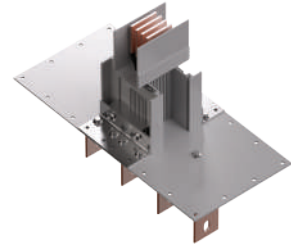
Joint Pack:

- Joint-Pack is standard on Elsewedy Busway system.
- Single bolt connection makes installation faster.
- Belleville washer provides equal pressure across the complete joint contact area to assure proper electrical contact.
- Double surface contact guarantees good current continuity.
- Joint temperature monitoring (Optional Solution).



Flanged End:

- Flanged-end unit allows the busway to be connected to a switchboard's bus-bar or to the terminals of a transformer, generator set, etc.



Tap Off Boxes:

- Easy and reliable installation.
- Eliminates forces against plugs during installation.
- Absolute safety solution.
- Smart design to accept many types/ models/ brands of standard breakers.
- Equipped with mechanical interlock mechanism; cannot be removed from the busway when the box is at 'on' position.
- IP54 protection.
- Plugin contacts silver plated.
- Customized design for the data center tap off.

Hangers (Trapeze Hanger & Spring):

There are two types of support for installing the busway:

- Trapeze hanger for horizontal installation.
- Spring hanger for vertical installation.

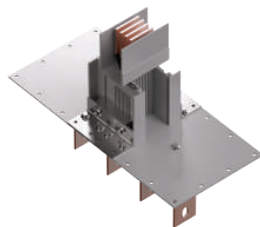
For installing the busway vertically, they ensure:

- Height and depth adjustment.
- Load sharing.
- Absorption of expansions, vibrations, etc.

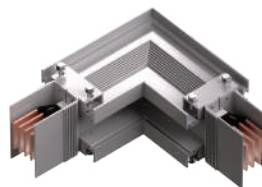


Accessories (Compact Sizes):

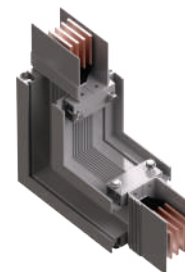
- Elbow
- Tee
- End Flange
- Combination
- Reducer
- Offset
- Expansion
- End Cap



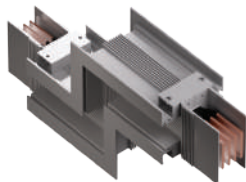
Flanged End



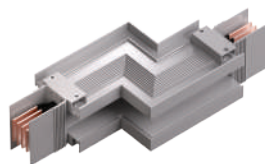
Elbow , Flat



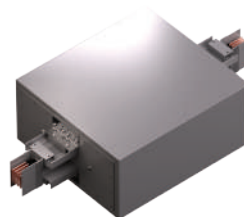
Elbow , Edge



Z- Edge



Z- Flat



Expansion



Cable Box

Key Figures



84
Total Projects



45 KM
Total Supply



6
Total Countries



Partners in Success

SYSTRA

Pinnacle
DESIGN STUDIOS.

Red Sea
Global

mivida

ARCHPLAN
ARCHITECTS & PLANNERS

ACUD
ADMINISTRATIVE CAPITAL
FOR URBAN DEVELOPMENT
العاصمة الإدارية للتنمية العمرانية

SHAKER
CONSULTANCY GROUP

الهيئة القومية للإتفاق
NATIONAL AUTHORITY FOR TENDERING
2017
وزارة النقل

EHAFA

IDG
MATRIX
Integrated Development Group

AAW
CONSULTING ENGINEERS

مجلس أبوظبي
للجودة والمطابقة
Abu Dhabi Quality &
Conformity Council



Arçelik

beko



جماعة الهندسين للكهرباء
ECG ENGINEERING CONSULTANTS GROUP S.A.

وزارة الصحة والسكان
Ministry of Health & Populations



هيئة المجتمعات العمرانية الجديدة
New Urban Communities Authority



ELSEWEDY ELECTRIC

ELSEWEDY ELECTRIC for Electrical Products
Head Office: Plot No. 13c03, Cairo Festival City, 5th Settlement
P.O.Box 310, New Cairo, Egypt
Factory: 3rd Industrial Zone A4, 10th of Ramadan City
Email: Info.Busway@elsewedy.com
Website: www.elsewedyelectric.com



Scan The QR Code